


## ERROR CODES QUICK TROUBLESHOOTING GUIDE

X51		<p><b>'Please close the cover'</b></p> <p>For safety the unit will not run with the lid open. Please close the cover when you are ready to start.</p>
X41		<p><b>'beaker missing or in wrong position'</b></p> <p>Please use a new beaker and ensure it is sitting in the correctly aligned position.</p>
X21		<p><b>'Overheat – Auto Rest for 20 mins'</b></p> <p>The unit has overheated and has gone into auto rest mode. The unit will turn back on once it is sufficiently cool.</p>
X31	<p>ERROR CODE: X31</p> <p>Temperature sensor error.</p>	<p><b>'Temperature Sensor Error'</b></p> <p>The unit must be returned for repair. Please contact</p>
X11	<p>Temperature warning mark</p> 	<p><b>'°C'</b></p> <p>The unit is running outside its temperature parameters. Allow the unit some time to cool before re-using.</p>

### 'Change water'

Periodically a message will appear to remind the user to change the water in the reservoir. If it has been changed the message can be deleted.

Warning: This is an ATTENDED Appliance. DO NOT leave the appliance unattended during use.

This appliance is not intended for use by persons (including children) with reduced physical, sensory or mental capabilities, or lack of experience and knowledge, unless they have been given supervision or instruction concerning use of the appliance by a person responsible for their safety. Children should be supervised to ensure that they do not play with the appliance. If the supply cord is damaged, it must be replaced by the manufacturer, its service agent or similarly qualified persons, in order to avoid a hazard.

\*Enteric coated, sustained release and slow release tablets should not be liquified in a Medasyst Unit. Please seek advice from your Doctor and/or Pharmacist regarding which medications are suitable for use in the Medasyst Unit.

For enquiries please email: [info@medasyst.com](mailto:info@medasyst.com)

For more information visit: [www.medasyst.com](http://www.medasyst.com)

REV 071024M

## INSTRUCTIONS FOR USE AND CARE



### CAUTION

- 1) Please read these instructions carefully.
- 2) Enteric coated, sustained release and slow release tablets should not be liquified.
- 3) Use only a specified beaker in the Unit.

### CLEANING AND MAINTENANCE

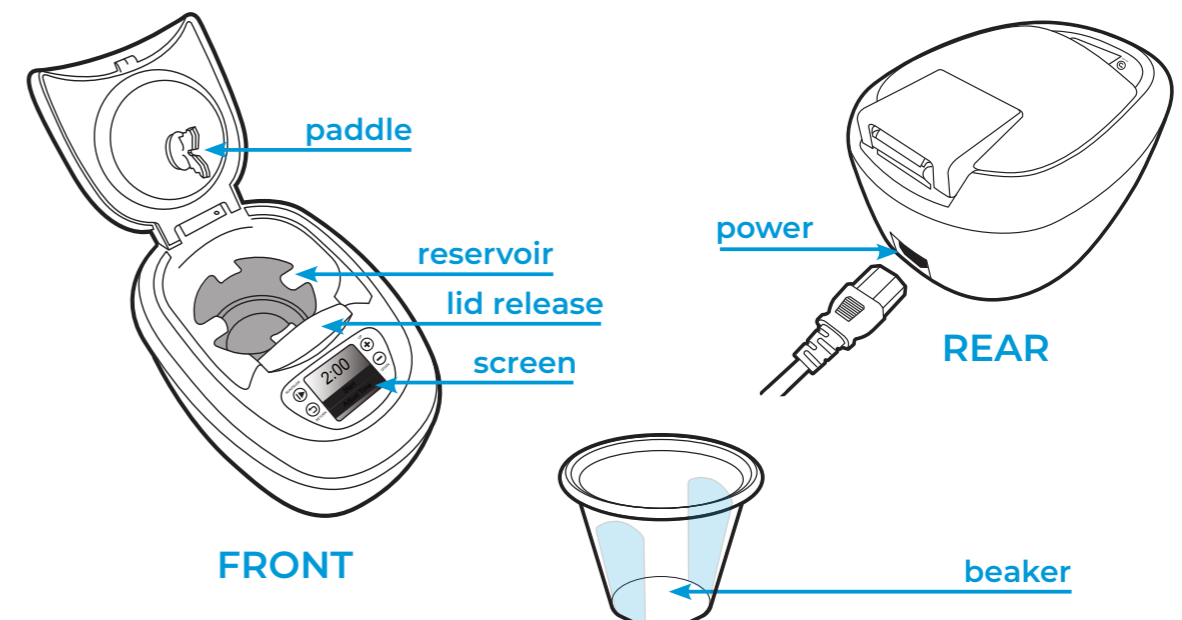
- 1) It is recommended that the stirring paddle (on the underside of the lid on Unit) be cleaned after each use. A Stirring Paddle is provided in the Beaker Pack.
- 2) It is recommended that the underside of the lid be thoroughly wiped after each use.
- 3) It is recommended that the reservoir water should be emptied after each use. **The Unit should NEVER OPERATE without water in the reservoir.**

### USE OF BEAKERS

It is recommended that each beaker is used **ONCE ONLY** to minimise the risk of cross contamination.

### SET UP

- 1) Please remove the Unit from its box and packaging.
- 2) Plug in the electrical power cable into the socket at the rear of the unit
- 3) Fit the stirring paddle (contained in the Beaker Pack) to the underside of the Unit's lid.



**1** Open the lid of the Unit by pressing the silver release button.

**2** Add clean water to the Unit's reservoir to the indicator line.

NB: The reservoir water should be emptied after each use. The Unit should NEVER run without water in the reservoir.

**3** Add 50ml water to the beaker's indicator line. (Some users may prefer less water with their medications). Add your tablet(s) and a teaspoon (6gm) of flavouring.

NB: It is recommended that our flavouring be used in the Medasyst Unit.

If your tablets are large, please break them in half.

**4** Place the beaker upright in the Unit ensuring the 2 large grooves on the beaker sides (highlighted in blue) sit in the 2 tongues either side of the reservoir.

Close the lid with a 'click'.

**5** Press the Run/Pause button. The Unit is pre-programmed to run for 2 minutes. This time can be increased or decreased depending on the size and number of tablets to be liquefied. To adjust the time, use the Up [+] and Down [-] buttons on the Unit.

**6** **Beep! Beep! Beep!**

When the cycle is complete the Unit will stop and sound a 'beep.' Open the Unit by pressing the silver button to release the lid.

**7** **Remove the beaker from the Medasyst Unit.**

It is advised the liquid is checked with a spoon to ensure no large particles remain.

Your liquified medication is now ready to use.

NB: Should another cycle be required repeat the process from Step 4.

Note: A longer cycle time can be set by following the instructions on the next page.

HOW TO ADJUST THE TIME

The Unit is pre set to a running time of 2:00 minutes. The time can be increased (up to 4 min) or decreased in 30-second increments.

To adjust the time, push the minus button to align the bar on the LCD screen over the text 'Adjust Time'

Lock the 'Adjust Time' mode by selecting the run/pause button

Decrease the desired time by using the minus button

Increase the desired time by using the plus button.

Once the desired time has been selected return the unit to the start mode by selecting the return button. The bar on the LCD screen should cover the word 'Start.'

The unit can be run in the new time by selecting the run/pause button. The unit may be paused while running using the run/pause button and the balance of the time will be maintained.

The 'Return' button may be selected when the unit is paused to return the timer to the full set time.